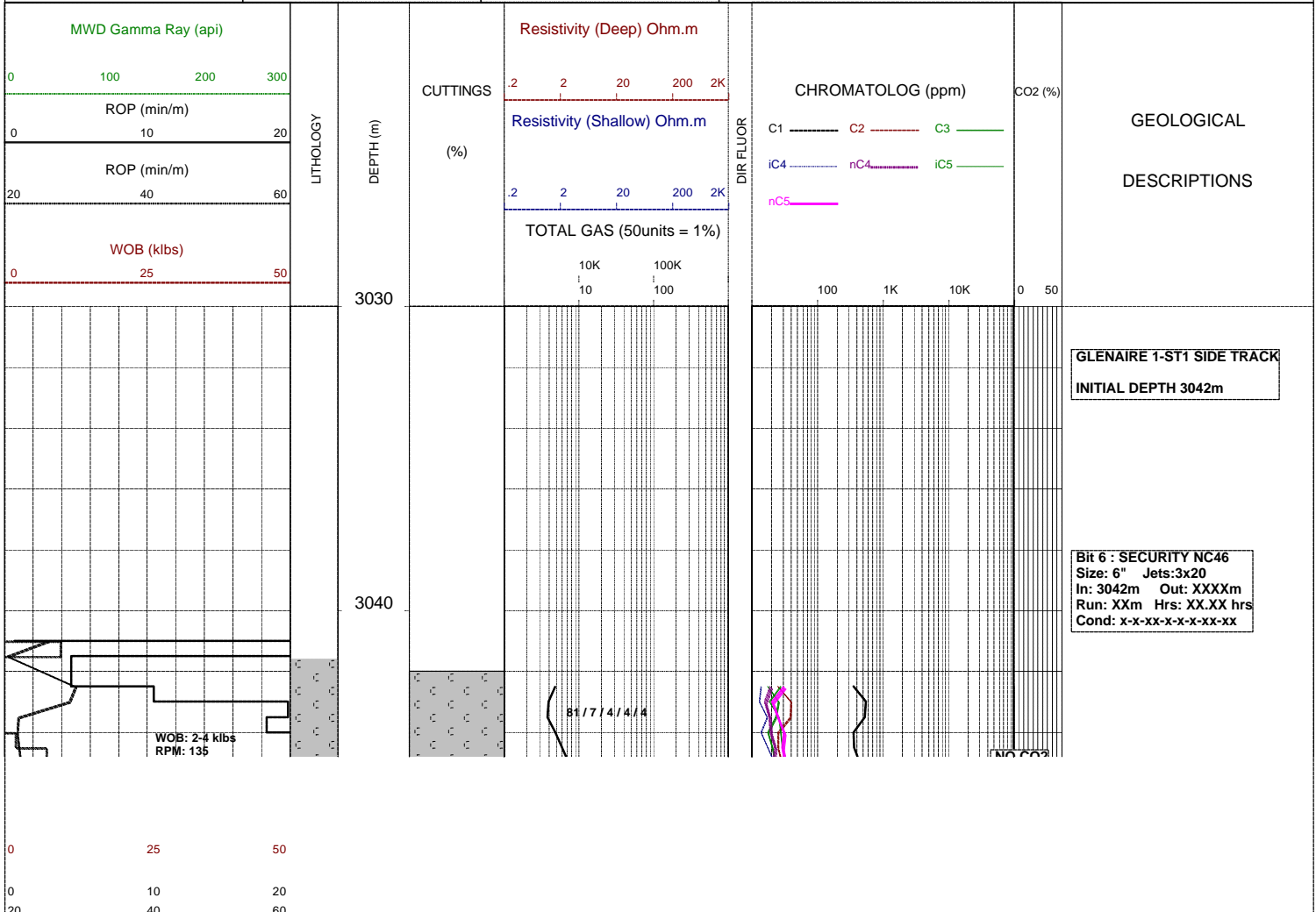


GLENAIRE 1 ST1

Field :	Kelly Bushing : PEP 160	Rig : ENSIGN 32	Open Hole:	Cased Hole:	Loggers : J.SUTTON
Block:	Ground Level : STATUS	Spud Date : 08/09/2006	17.5" (12.25") 307m	13.375" (9.625") 303.5m	N.LUIS
State : VICTORIA	GRS80 Ellipsoid MGA94 Zone54 :	TD Date : XX/XX/2006	12.25" (8.5") 1255m	9.625" (7.0") 1252m	J.TRETHEWEY
Country : AUSTRALIA	Lat. : 37°34'47.03S	Total Depth : VVV	8.5" XXXXm		
Scale : 1/ 200	Long. : 140°59'52.25E	Final Status : WWW		RRRR SSSS AAA	

LITHOLOGY	ACCESSORIES	DRILLING DATA	ABBREVIATIONS
<ul style="list-style-type: none"> Conglomerate Coarse Sandstone Med Sandstone Calcareous Sst Silty Sandstone Siltstone Carb. Siltstone Calc. Siltstone Clay Limestone Dolomite Coal Anhydrite Gypsum Igneous Volcanic Metamorphic Cement 	<ul style="list-style-type: none"> Pyrite Siderite Glauconite Feldspar Mica Ferrous Chert Calcareous Dolomitic Carbonaceous Lithoclast Breccia Foraminifera Corals Inoceramus Bryozoa Plant remains Fossils 	<ul style="list-style-type: none"> Casing Shoe Bit Trip Wiper Trip Core DST Deviation Survey 	<ul style="list-style-type: none"> BOPD - Barrels of Oil Per Day BWPD - Barrels of Water Per Day CG - Connection Gas CO - Circulate Out COND - Condensate c/c - Crush Cut DST - Drill Stem Test FLOW - Flow Rate (gal/min) GCM - Gas Cut Mud GCW - Gas Cut Water GTS - Gas To Surface INJ - Injection of Mist (bbls/hr) LCM - Lost Circulation Material MMCFD - Million Cubic Feet / Day NGTS - No Gas To Surface NOTS - No Oil To Surface NFTS - No Flow To Surface OCM - Oil Cut Mud OG - Over Gauge OH - Open Hole OTS - Oil To Surface Q - Flow Rate REC - Recovery FLUOR - Fluorescence ROP - Rate Of Penetration RPM - Revolutions Per Minute RTSTM - Rate Too Small To Measure Rw - Resistivity water r/r - Ring Residue SCFM - Standard Cubic Ft/Min (air) SGCM - Slightly Gas Cut Mud SPM - Strokes Per Minute SPP - Stand Pipe Pressure SWC - Side-Wall Core TG - Trip Gas WOB - Weight On Bit
		MUD DATA	
		<ul style="list-style-type: none"> MW - Mud Weight (lb/gal) FV - Funnel Viscosity (s/qt) PV - Plastic Viscosity (cps) YP - Yield Point (lb/100ftsq) Gel - Gel Strength (10sec) WL - Water Loss (cc/30min) pH - Acidity / Alkalinity Ck - Cake (32nd/inch) O/W/S - Oil / Water / Solids Cl - Chlorides (mg/L) K+ - Potassium (mg/L) Rmf - Res. Mud Filtrate (ohmm) 	



SPP: 2800-3000 psi
FLW: 248 gpm

MW: 10.2
FV: 47
PV: 13
YP: 9
Gels: 2/8
WL: 7.2
CK: 1
Sol: 8.5
pH: 11
Cl: 113k

WOB: 10-12 klbs
RPM: 190
SPP: 2800-3000 psi
FLW: 251 gpm

NO CO2
NO H2S

SURVEY @ 3253.54m: 7.67° 343.28T

3050
3060
3070
3080

83 / 7 / 5 / 3 / 2
82 / 6 / 5 / 5
84 / 8 / 6 / 2

100 % Cement

SANDSTONE: lt-med brn/gry, lt gry, vf-f, wl srt, sbnd, com mod wk calc cmt, com strg sil cmt, mnr off wh arg mtx i/p, com blk, wh, tn, grn, rd liths, hd-v hd, ti-nil vis por, min fluor only.

SILTY CLAYSTONE: med gry, dk brn gry, arg, aren i/p, te liths, tr carb spks, sft, sbbiky.

